

 **PREMIER**  
CONDUIT



## Premier-Plenum Duct

Premier Plenum Duct is a flexible, non-metallic, corrugated raceway used for effective cable and fiber optic management within interior raceways. Premier Plenum meets UL-(910) standards for the National Electrical Code, Article 770, and satisfies UL-2024 standards for low smoke and flame propagation.

Premier Plenum is offered in 1", 1¼" and 1½", with pre-installed pull tape for easy cable installation. The standard color is orange and is offered in a variety of other colors. Sequential marked footage is standard. Custom options, such as multiple colors per reel and Slit Duct, are also available.

Future growth or maintenance of your interior cable system is made easy with Premier Plenum.



### Plenum Reels

Size	Color	Part No.	Nominal I.D.	Nominal O.D.	Pull Tape	Reel Size	Reel Length (ft.)
1"	Orange	P-100T- 500	1.049"	1.35"	900 lb	36-36-21	500
1"	Orange	P-100T-1000	1.049"	1.35"	900 lb	36-36-21	1000
1"	Orange	P-100T-2000	1.049"	1.35"	900 lb	44-36-21	2000
1"	Orange	P-100T-2800	1.049"	1.35"	900 lb	48-41-24	2800
1"	Orange	P-100T-5000	1.049"	1.35"	900 lb	66-41-24	5000
1"	Orange	P-100T-6000	1.049"	1.35"	900 lb	72-41-24	6000
1"	Orange	P-100T-9000	1.049"	1.35"	900 lb	82-41-24	9000
1¼"	Orange	P-125T- 700	1.25"	1.56"	900 lb	36-36-21	700
1¼"	Orange	P-125T-1500	1.25"	1.56"	900 lb	44-36-21	1500
1¼"	Orange	P-125T-1800	1.25"	1.56"	900 lb	48-41-24	1800
1¼"	Orange	P-125T-3400	1.25"	1.56"	900 lb	66-41-24	3400
1¼"	Orange	P-125T-4000	1.25"	1.56"	900 lb	72-41-24	4000
1¼"	Orange	P-125T-6000	1.25"	1.56"	900 lb	82-41-24	6000
1½"	Orange	P-150T- 500	1.57"	1.80"	900 lb	36-36-21	500
1½"	Orange	P-150T- 700	1.57"	1.80"	900 lb	44-36-21	700
1½"	Orange	P-150T-1000	1.57"	1.80"	900 lb	48-41-24	1000
1½"	Orange	P-150T-2500	1.57"	1.80"	900 lb	66-41-24	2500
1½"	Orange	P-150T-3500	1.57"	1.80"	900 lb	72-41-24	3500
1½"	Orange	P-150T-5000	1.57"	1.80"	900 lb	82-41-24	5000

### Plenum Coils

Size	Color	Part No.	Nominal I.D.	Nominal O.D.	Pull Tape	Coil Length (ft.)
1"	Orange	P-100T-500	1.049"	1.35"	900 lb	Up to 500
1¼"	Orange	P-125T-500	1.25"	1.56"	900 lb	Up to 500
1½"	Orange	P-150T-350	1.57"	1.80"	900 lb	Up to 350

### Test Results (Using Test Method UL-2024)

Properties	Value
Smoke peak optical	0.02
Smoke average optical density	0.01
Max. flame spread distance (ft.)	1.5'
Max. flame temperature	554°F

### Sample Part Number

P	100	T	S	2500
Plenum	1" (I.D.)	Polyester Tape	*Slit Duct (optional)	Put-Up

\* Pull tape not available w/ Slit Duct

## Corrugated HDPE

Premier Corrugated HDPE is manufactured from High Density Polyethylene (HDPE) and is intended to be placed inside of existing innerduct. It's ideal for pulls under 1000 ft. and is designed to reduce surface contact when pulling cable. This lightweight product offers maximum flexibility, and allows for installation in small or restricted areas. Corrugated duct is available in 1", 1¼" and 1½". The standard color is orange and is offered in a variety of other colors. Sequential marked footage is standard. Custom options, such as multiple colors per reel and Slit Duct, are also available.



### Corrugated HDPE Reels

Size	Color	Part No.	Nominal I.D.	Nominal O.D.	Pull Tape	Reel Size	Reel Length (ft.)
1"	Orange	PEC-100T- 500	1.049"	1.35"	900 lb	36-36-21	500
1"	Orange	PEC-100T-1000	1.049"	1.35"	900 lb	36-36-21	1000
1"	Orange	PEC-100T-2000	1.049"	1.35"	900 lb	44-36-21	2000
1"	Orange	PEC-100T-2800	1.049"	1.35"	900 lb	48-41-24	2800
1"	Orange	PEC-100T-5000	1.049"	1.35"	900 lb	66-41-24	5000
1"	Orange	PEC-100T-6000	1.049"	1.35"	900 lb	72-41-24	6000
1"	Orange	PEC-100T-9000	1.049"	1.35"	900 lb	82-41-24	9000
1¼"	Orange	PEC-125T- 700	1.25"	1.56"	900 lb	36-36-21	700
1¼"	Orange	PEC-125T-1500	1.25"	1.56"	900 lb	44-36-21	1500
1¼"	Orange	PEC-125T-1800	1.25"	1.56"	900 lb	48-41-24	1800
1¼"	Orange	PEC-125T-3400	1.25"	1.56"	900 lb	66-41-24	3400
1¼"	Orange	PEC-125T-4000	1.25"	1.56"	900 lb	72-41-24	4000
1¼"	Orange	PEC-125T-6000	1.25"	1.56"	900 lb	82-41-24	6000
1½"	Orange	PEC-150T- 500	1.57"	1.80"	900 lb	36-36-21	500
1½"	Orange	PEC-150T- 700	1.57"	1.80"	900 lb	44-36-21	700
1½"	Orange	PEC-150T-1000	1.57"	1.80"	900 lb	48-41-24	1000
1½"	Orange	PEC-150T-2500	1.57"	1.80"	900 lb	66-41-24	2500
1½"	Orange	PEC-150T-3500	1.57"	1.80"	900 lb	72-41-24	3500
1½"	Orange	PEC-150T-5000	1.57"	1.80"	900 lb	82-41-24	5000

### Corrugated HDPE Coils

Size	Color	Part No.	Nominal I.D.	Nominal O.D.	Pull Tape	Coil Length (ft.)
1"	Orange	PEC-100T-500	1.049"	1.35"	900 lb	Up to 500
1¼"	Orange	PEC-125T-500	1.25"	1.56"	900 lb	Up to 500
1½"	Orange	PEC-150T-350	1.57"	1.80"	900 lb	Up to 350

#### Sample Part Number

PE	C	100	T	S	2500
Polyethylene (High Density)	Corrugated	1" (I.D.)	Polyester Tape	*Slit Duct (optional)	Put-Up

\* Pull tape not available w/ Slit Duct

## Premier-Riser Duct

Premier Riser Duct is a flexible, non-metallic, corrugated raceway used for effective cable and fiber optic management within interior raceways. Premier Riser meets UL-(1666) standards safety test for flame propagation height of electrical and optical fiber cables installed vertically in shafts. Premier also meets UL-2024 standards for safety optical fiber cable raceway. Premier Riser is offered in 1", 1¼" and 1½", with pre-installed pull tape for easy cable installation. The standard color is orange and is offered in a variety of other colors. Sequential marked footage is standard. Custom color options are available.



### Riser Reels

Size	Color	Part No.	Nominal I.D.	Nominal O.D.	Pull Tape	Reel Size	Reel Length (ft.)
1"	Orange	R-100T- 500	1.049"	1.35"	900 lb	36-36-21	500
1"	Orange	R-100T-1000	1.049"	1.35"	900 lb	36-36-21	1000
1"	Orange	R-100T-2000	1.049"	1.35"	900 lb	44-36-21	2000
1"	Orange	R-100T-2800	1.049"	1.35"	900 lb	48-30-24	2800
1"	Orange	R-100T-5000	1.049"	1.35"	900 lb	66-41-24	5000
1"	Orange	R-100T-6000	1.049"	1.35"	900 lb	72-41-24	6000
1"	Orange	R-100T-9000	1.049"	1.35"	900 lb	82-41-24	9000
1¼"	Orange	R-125T- 700	1.25"	1.56"	900 lb	36-36-21	700
1¼"	Orange	R-125T-1000	1.25"	1.56"	900 lb	44-36-21	1000
1¼"	Orange	R-125T-1800	1.25"	1.56"	900 lb	48-41-24	1800
1¼"	Orange	R-125T-3400	1.25"	1.56"	900 lb	66-41-24	3400
1¼"	Orange	R-125T-4000	1.25"	1.56"	900 lb	72-41-24	4000
1¼"	Orange	R-125T-6000	1.25"	1.56"	900 lb	82-41-24	6000
1½"	Orange	R-150T- 500	1.57"	1.80"	900 lb	36-36-21	500
1½"	Orange	R-150T- 700	1.57"	1.80"	900 lb	44-36-21	700
1½"	Orange	R-150T-1000	1.57"	1.80"	900 lb	48-30-24	1000
1½"	Orange	R-150T-2500	1.57"	1.80"	900 lb	66-41-24	2500
1½"	Orange	R-150T-3500	1.57"	1.80"	900 lb	72-41-24	3500
1½"	Orange	R-150T-5000	1.57"	1.80"	900 lb	82-41-24	5000

### Riser Coils

Size	Color	Part No.	Nominal I.D.	Nominal O.D.	Pull Tape	Coil Length (ft.)
1"	Orange	R-100T-500	1.049"	1.35"	900 lb	Up to 500
1¼"	Orange	R-125T-500	1.25"	1.56"	900 lb	Up to 500
1½"	Orange	R-150T-350	1.57"	1.80"	900 lb	Up to 350

### Test Results (Using Test Method UL-2024)

Properties	Value
Smoke peak optical	0.02
Smoke average optical density	0.01
Max. flame spread distance (ft.)	1.5'
Max. flame temperature	554°F

### Sample Part Number

R	100	T	S	2500
Riser	1" (I.D.)	Polyester Tape	Slit Duct	Put-Up

\* Slit Duct option is not available on Riser Duct



Premier Conduit is a minority owned manufacturer of corrugated conduit for Telecommunications and other markets. Established in 2001, Premier Conduit currently manufactures Corrugated HDPE, Plenum and Riser Duct. Large enough to supply your needs but small enough to maintain the best price and value in the industry.

Consider Premier Conduit your source for savings and partner in success.



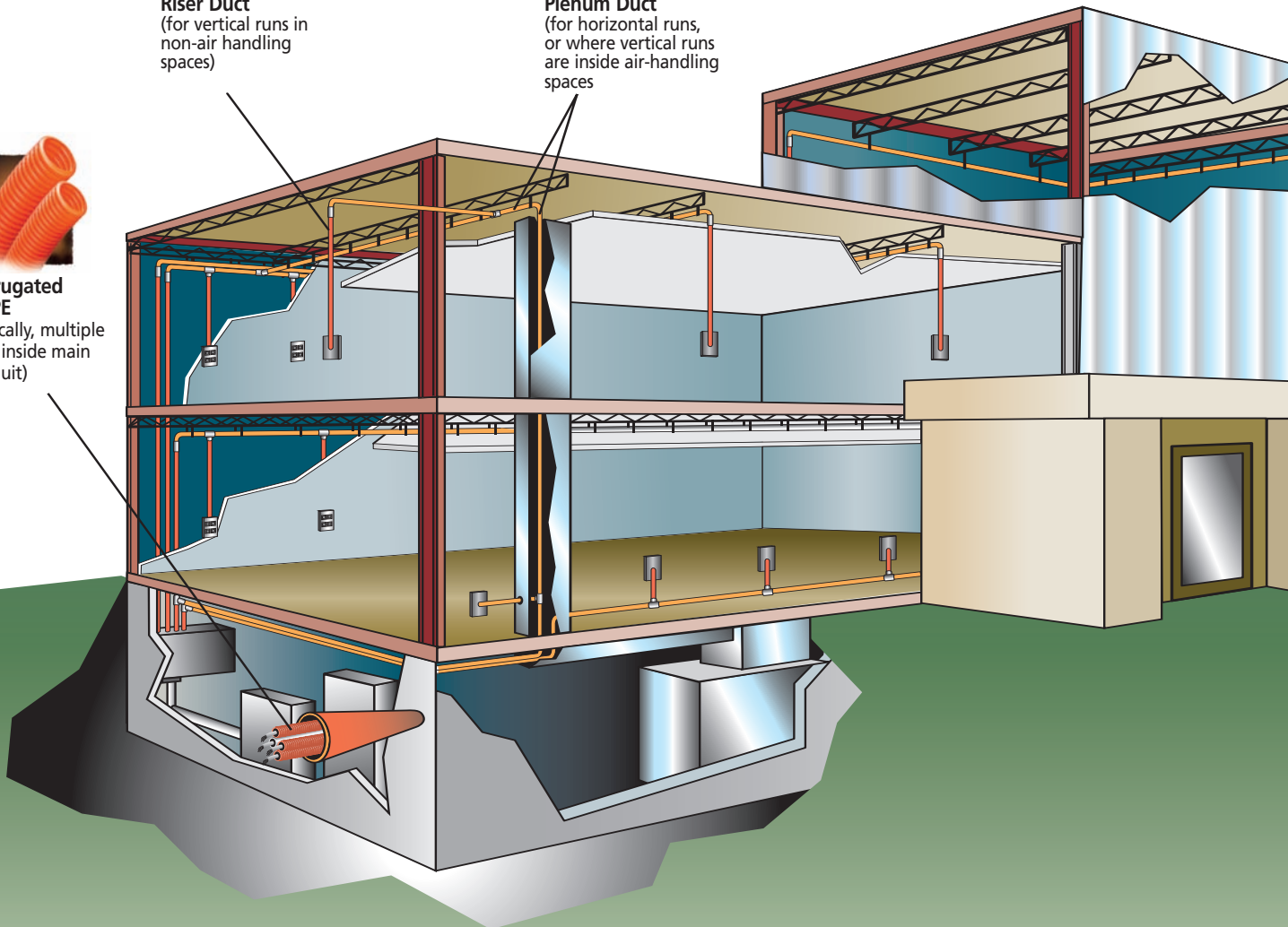
**Riser Duct**  
(for vertical runs in non-air handling spaces)



**Plenum Duct**  
(for horizontal runs, or where vertical runs are inside air-handling spaces)



**Corrugated HDPE**  
(typically, multiple runs inside main conduit)



## Premier Pull Boxes

For your convenience, Premier offers Pull Boxes for coils.

Box Size 31" x 15" x 32"

Holds up to 250' of 1" to 1-1/4"

Box Size 40" x 15" x 40"

Holds up to 500' of 1" to 1-1/4" and up to 300 ft. of 1-1/2"



## Premier Couplers

Duct Description	Snap-On Coupler Pt. No.	Terminal Adapter Pt. No.
1" Riser/Plenum	CP-100-P	CPTA-100-P
1-1/4" Riser/Plenum	CP-125-P	CPTA-125-P
1-1/2" Riser/Plenum	CP-150-P	CPTA-150-P
1" HDPE	CP-100-PE	CPTA-100-PE
1-1/4" HDPE	CP-125-PE	CPTA-125-PE
1-1/2" HDPE	CP-150-PE	CPTA-150-PE



Snap-On Coupler



Terminal Adapter



Universal Aluminum  
(screw-on type:  
sizes 1" thru 2")



Expansion Type Duct Plugs  
(can be used with pull tape)



1409 South Shore Drive  
Erie, PA 16505  
ph 814.451.0898  
fax 814.459.1308  
[www.premierconduit.com](http://www.premierconduit.com)





**PREMIER**  
CONDUIT

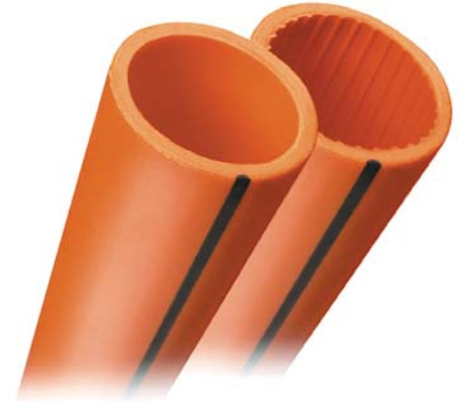
## Smoothwall Innerduct

Premier Smoothwall is manufactured from High Density Polyethylene (HDPE) and is intended for use in underground and innerduct applications. Smoothwall offers superior protection, increases pathways of existing duct systems and allows extra channels for future cabling needs. Cable can be installed by pre-installed pull-rope or jetting.

Interior Ribbedwall offers superior protection, increases pathways of existing duct systems and allows extra channels for future cabling needs. Interior Ribs dramatically reduce surface contact with cable during installation.

Smoothwall is available in 1", through 4". The standard colors are black or orange, and offered in a variety of other colors. Sequential marked footage is standard. Custom options, include up to four multiple colors per reel (up to 2") and pre-lubricated duct.

Installation Methods include plowing, open trench, directional boring or pulled through existing conduit.



### Smoothwall Reel Put-ups

Reel Size	Color	Part No.	Wall	Outside Dimension	Inside Dimension	Max Pull Tension	Reel Size	Length (ft.)
1"	Black	SW-100-SDR11-7000	SDR 11	1.315	1.075	950	72-45-24	7000
1"	Black	SW-100-SDR13.5-1800	SDR 13.5	1.315	1.121	790	48-30-24	1800
1"	Black	SW-100-SDR13.5-7000	SDR 13.5	1.315	1.121	790	72-45-24	7000
1¼"	Black	SW-125-SDR11-5000	SDR 11	1.660	1.358	1520	82-45-30	5000
1¼"	Black	SW-125-SDR13.5-2500	SDR 13.5	1.660	1.414	1260	66-45-30	2500
1¼"	Black	SW-125-SDR13.5-5000	SDR 13.5	1.660	1.414	1260	82-45-30	5000
1¼"	Black	SW-125-SDR13.5-8000	SDR 13.5	1.660	1.414	1260	96-45-32	8000
1½"	Black	SW-150-SDR11-5000	SDR 11	1.900	1.554	1760	96-45-32	5000
1½"	Black	SW-150-SDR13.5-5000	SDR 13.5	1.900	1.618	1455	96-45-32	5000
1½"	Black	SW-150-SDR11.5-2500	SDR 13.5	1.900	1.618	1455	66-45-30	2500
2"	Black	SW-200-SCH40-2500	SCH 40	2.375	2.067	2300	82-45-40	2500
2"	Black	SW-200-SCH80-2500	SCH 80	2.375	1.939	3140	82-45-40	2500
2"	Black	SW-200-SDR11-4000	SDR 11	2.375	1.943	3105	96-45-32	4000
2"	Black	SW-200-SDR13.5-4000	SDR 13.5	2.375	2.023	2580	96-45-32	4000
3"	Black	SW-300-SDR13.5-1000	SDR 13.5	3.500	2.982	5590	96-45-68	1000
4"	Black	SW-400-SDR11-766	SDR 11	4.500	3.682	11145	102-45-68	766
4"	Black	SW-400-SDR13.5-766	SDR 13.5	4.500	3.834	9250	102-45-68	766

#### Sample Part Number

SW	100	SDR11	7000	T	RI	ST
Polyethylene (High Density)	Size 1 in. (I.D.)	Wall Rating	Length in Ft.	Polyster Tape 1250 lb.	Ribbed Interior	Striping

\* Standard Colors are Black or Orange. Other colors are available

1409 South Shore Drive  
 Erie, PA 16505  
 ph 814.451.0898  
 fax 814.459.1308  
[www.premierconduit.com](http://www.premierconduit.com)



Made in U.S.A.  
 TA-6/09